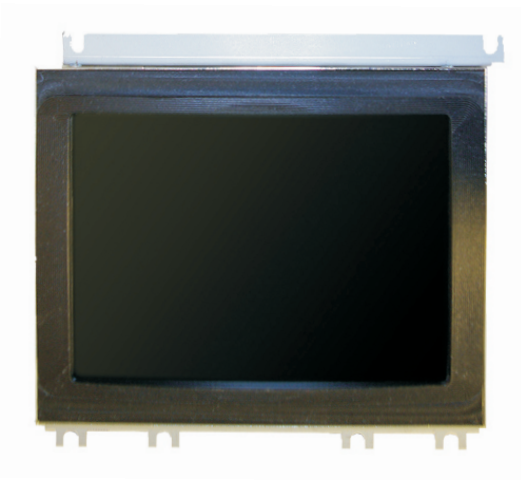


SEM8-K Sinumerik 810/ S3

TFT-Replacement-monitor 8,4"



Overview

- 8,4 " TFT / LCD monitor for Sinumerik 810
- Replacement for 9" CRT-monitor
- 6FC3988-7AF01, 6FC3547-0AA-Z
6FC3471-1AAZ, 6FC3551-AC-Z,
6FC3821-2AC-Z
- Settings via on-screen-menu
- Front adapter made of plastic with original curve of the CRT

Description

The monitors SEM8-K are used as replacement for 9" CRT-monitors for the control Sinumerik 810/3T 810/M/3M from Siemens.

The default timing is compatible to the control, this means after connecting the monitor, the visualisation works correctly. Further adjustments can be made via on-screen-menu.

The connector and interface for the graphic-signal are compatible to the control.

Fast and simple mounting in the section of the 9/10" CRT without any mechanical changes and without any specialized knowledge.

Technical data

Overview:

Industry TFT monitor 8,4" for mounting into the frontplate

Control:

Sinumerik 810/3T, 810/M/3M

Original monitor:

9" CRT-monitor monochrome
6FC3988-7AF01, 6FC3547-0AA-Z
6FC3471-1AAZ, 6FC3551-AC-Z,
6FC3821-2AC-Z

Interfaces:

16-pin flat cable

Synchronisation / Timings:

compatible to the control

Resolution:

max. 640x480

Visible picture:

154 x116mm

Adjustments:

via on-screen-menu

Brightness / Contrast:

min. 400 cd/qm, 500:1

Power supply:

15VDC Signalline

MTBF:

Backlights min. 50000h

Mechanical dimensions:

compatible

Material:

Frontpanel: front adapter made of plastic with original curve of the CRT, Protective glass

Environmental conditions:

Operating temperature 0-50°C

Storage temperature 0-65°C

Humidity: 10 - 80 % rel. humidity, not condensing

Protection class:

Front IP 65

Norms

EN55022 EN55024 EN61010-1

Part number

10030847 SEM8-K-Sinumerik-810