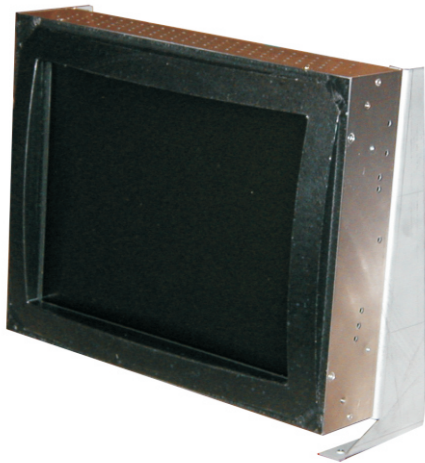


SEM12-K Bosch CC200/300 TFT-Replacement 12"



Overview

- 12 " TFT / LCD Monitor for Bosch CC200, CC220, Cc300 and CC320
- Replacement for 14" CRT-monitors type MAC2014
- Connector and signal timing compatible to the control
- Settings via on-screen-menu
- Front adapter made of plastic with original curve of the CRT

Description

The monitors SEM12-K are used as replacement for 14" CRT-monitors for the control CC-200, CC-220, CC-300 and CC-320 from Bosch.

The default timing is compatible to the control, this means after connecting the monitor, the visualisation works correctly. Further adjustments can be made via on-screen-menu.

Connector and interface for graphic-signal are compatible to the control.

Mounting from the back milled - front adapter made of plastic with original curve of the CRT, so the replacement is easy. The monitor has to be mounted via mounting-angles in the old CRT-chassis.

The curved front adapter guarantees a good sealing in the panel.

Technical data

Overview:

Industry TFT monitor 12" for mounting via angles on the backside into the panel

Control:

Bosch CC200, CC220, CC300, CC320

Original monitor:

14" CRT color MAC-2014

Interfaces:

10pin post plug HD-SUB15
or 5x BNC

Synchronisation / Timings:

compatible to the control

Resolution:

max. 800x600

Visible pictures:

246x185mm

Adjustments:

via on-screen-menu

Brightness / Contrast:

min. 400 cd/qm, 500:1

Power supply:

90-260 VAC

MTBF:

Backlights min. 50000h

Mechanical dimensions:

compatible

Material:

Frontpanel: front adapter made of plastic with original curve of the CRT, protective glass

Environmental conditions:

Operating temperature 0-50°C

Storage temperature 0-65°C

Humidity: 10 - 80 % rel. humidity not condensing

Protection class:

Front IP 65

Norms

EN55022 EN55024 EN61010-1

Part number:

10030902 SEM12-K-Bosch-CC200-300